

SELECTED *Press*

NADINE HENNELLY

## De top-modèle à photographe Le parcours pas banal de Nadine Hennelly

Nadine Hennelly a quitté le Québec à 17 ans pour une vie pleine de rebondissements, et ce, sans plan de carrière ni stratégie.

TEXTE : CHRISTIANE GUÉARD

Elle a 17 ans, un joli minois et vit heureuse entre un père de Laval et une mère de Westmount. Un été, un ami de sa mère l'engage pour participer à un défilé de mode dans une petite boutique. Un photographe européen de passage déjeune dans un restaurant à côté. Attiré par le bruit que provoque le défilé, il découvre celle qui deviendra le mannequin-vedette d'une campagne publicitaire pancanadienne pour un designer dont Nadine a aujourd'hui oublié le nom, mais pas le cachet : 350\$. « Tout ce dont je me souviens, c'est que nous étions déçues des conditions, ma mère et moi : pas de maquilleur, pas de coiffeur, pas d'assistants ! Le studio était vide, le photographe en question m'a demandé de troquer mon jean pour une robe noire que j'avais apportée, de relever ma tignasse avec une pince pour dégager mon visage, et c'est tout ! Trois semaines après, il m'informait que j'avais passé avec succès les tests photos et que j'étais engagée ! »

Après ce premier contrat, ce fut la manne : l'agence Ford veut envoyer Nadine à Paris ; John Casablanca de l'agence Elite la réclame pour faire la page couverture de la revue *Mademoiselle* ; Gilles Bensimon la sollicite pour le *Elle* américain. Elle fait la page couverture de plusieurs magazines, dont *Cosmopolitan* et *Vogue*. La carrière de Nadine est lancée, et ce furent des années fabuleuses. « J'ai mené une vie hors du commun, j'ai voyagé à travers le monde, j'ai dormi dans des palaces et fréquenté quelques grands. Mes collègues de travail s'appelaient Cindy Crawford, Naomi Campbell, Linda Evangelista, Uma Thurman... J'avais la chance de travailler avec de véritables légendes de la photo, comme Francesco Scavullo, Richard Avedon, Oliviero Toscani, Arthur Elgort, Albert Watson, Michel Compte, Walter Chin, Steven Miesel, Peter Beard, etc. »

Deuxième coup de baguette. La grande décennie des top-modèles s'achève. Que faire ? À ce moment précis, David Letterman (l'animateur du célèbre *Late Show with*

*David Letterman*) entre dans la vie professionnelle de Nadine. Il la connaît comme mannequin, l'a rencontrée dans des mondantités et a apprécié son humour. Il lui propose de participer chaque soir à son émission dans le cadre de sketches : elle devient une des *Hi-Ho Girls*, qui accompagnait Letterman dans ses délires ! L'aventure télévisuelle durera huit ans, sept jours sur sept, du non-stop. La vie de Nadine est plus que jamais un tourbillon de paillettes. Elle va de cocktails en vernissages, rencontre toutes les célébrités sur le plateau et en coulisse. Elle habite un loft de trois millions de dollars au cœur de Manhattan, mais n'y vit qu'en coup de vent. Elle mène une vie de papier glacé où c'est en jet privé mis à sa disposition qu'elle va, pour Noël, remonter le moral des troupes américaines au Kosovo.

Troisième coup de baguette. Années 2006-2007 : alors que Nadine est de retour à Montréal après s'être distinguée comme photographe professionnelle faisant les portfolios des nouvelles recrues pour les agences comme IMG Models, T-Models, Supreme Models, Elite, Ford, Id Models, qu'elle souffre et savoure les joies de la maternité, elle est sollicitée pour faire, en tant que photographe cette fois, les photos publicitaires d'une mégacampagne médiatique autour du mannequin hollandais Frédérique Vanderwal, égérie de Victoria's Secret.

Aujourd'hui, Nadine Hennelly a quitté les paillettes : s'occuper de son fils, bien manger, voir des amis, être entourée d'espaces verts, profiter de Montréal qu'elle vénère, voilà ses priorités. « Ma vie a toujours été une succession de coups de foudre, une chaîne de hasards heureux. » Alors, de quoi demain sera fait, elle n'en a aucune idée, mais elle n'a aucune crainte non plus. ■

Nadine Hennelly, photographe  
[www.nadinehennelly.co](http://www.nadinehennelly.co)  
TÉL : 514 799-9992





*Nadine Hennelly with one of her works from PLAY.*

## Urban inspirations

Published on November 22nd, 2010

By Hiba Zayadin

**Being surrounded by skyscrapers, bridges and an intricate system of highways doesn't necessarily inspire creativity in the average person — but photographer Nadine Hennelly has managed to portray Montreal's landmark sites and industrial parks in an artistic fashion that brings out the beauty in concrete formations.**

Topics : [Montreal](#)

“With photography, what I love is that you could take something huge and still transport it,” said Hennelly, who launches a new series of images entitled PLAY this week at Studio H.

This exhibition is the second part of her series Urban Abstractions. This time, she decided to focus mainly on photographing amusement parks.

“I really wanted to invoke that feeling of childhood and playfulness in this series,” she said.

According to Hennelly, amusement parks are industrial sites created for the sole purpose of pleasure. For the last two years, she has been photographing them in and around the Montreal area.

One thing that makes Hennelly stand out is the way she presents her images. As most are abstract, she offers collectors a chance to interact with her art by giving them the freedom to combine different images and hang them in various ways.

“I don't like to dictate things to people,” she said. “I like having an exchange. I like people to take my work but then infuse it with their own ideas. Then the work is not just about me — it becomes about you, and how you see it and how you want to put in your place. So it would reflect something of you.”

When a piece is grouped with either its mirror image or another piece, she said, it changes the relationship between the two images and creates a new meaning of the work.

Hennelly's exhibition runs from Nov. 27 through Dec. 15 at Studio H, 2252 St. Antoine Street West. Vernissage is Friday, Nov. 26 from 6:30 to 8:30 p.m.

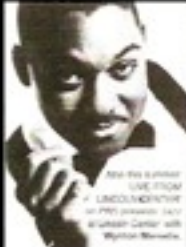
# INSIDE

## PHOTOGRAPHY

Ford supermodel Frederique Van Der Wal has been an object of admiration for years—most recently when she turned into the Celebrity Mole on television. In our opinion, she's never looked better than in a recent series of pictures made by up-and-coming photographer **Nadine Hennelly**, one of which you see here. Hennelly, a former model herself, is just breaking into the photo business after working for the past four years on *The Late Show* with David Letterman as one of the glamorously dressed models appearing in comedy sketches—such as Dave's beloved "Will It Float?" segment, where Hennelly dropped objects of various sizes and weights into a tank of water. "Let me tell you, during the New York City drought the water in that tank was getting pretty scummy—they never changed it!" Hennelly says of her TV gig. Now, she's headed to Paris to shoot fashion. (See *State of the Art*, page 20.) A true believer in digital technology, Hennelly made this shot in the basement of her New York apartment building with a Fujifilm FinePix S2 Pro digital SLR and an AF Nikkor 24mm f/2 lens. Light came from a single Profoto strobe head bounced into an umbrella. The camera was set to ISO 100, and exposure was 1/125 second at f/5.6.

© NADINE HENNELLY. MAKEUP: PIERRE MICHAEL. HAIR: ANDREAS STREIF. ANDREAS STREIF/ANDREAS STREIF

NADINE HENNELLY



The emotional impact of a series of films follows being the victim of a mugging. Because it resides both internally and externally on the human body," she says thoughtfully. "The work conveys a deeper sense of self and how one shifts." She smiles. "And each day's subject matter is always a new form."

"Even if you do the same video every day, no two days are alike. You'll always experience them slightly differently."

For Nadine, the idea of making one 78-day marriage cycle became a vehicle, "to explore a deeper connection with an internal engine, and to subtly interweave, on my daily video series."



It's intentional. "Both men and women felt they were serious and interesting. They were surprised how different each form was — in shape, split of colors, and mood."

She also displays, "Cuddled Woman," which took five months to create. "I compressed the female body, implying an emotional scale to the work. People could not touch their hands off it, they were so attracted, so needing to touch it."

Nadine feels they were struck by the innate beauty of the stone and the work that went into it, as well as how "warm and soft" it actually was.

"I used marble as opposed to marble, because it absorbs light, and I think that works so well with stone."

A last word on "28 Days": "City, being warm and vulnerable, represents the innate intensity of the shapes and contours," says the artist. "It expresses the most quiet and interior response that exists within the walls of the city of my body, and its exterior."

Shattering Anna Chibrikova Serenice, one of the city's premier high-profile, The Bridal Garden includes pre-wedding contemporary gowns donated by manufacturers, retailers, and individuals. The shop features creations from Vera Wang, Carolina Herrera, Marchesa, Yumi Katsura, and Priscilla of Boston.

Founded in 1922, Shattering Anna is one of the oldest charities in the city, helping over 2,000 children and their families each year in day care, tutoring, adoption, special education, after school, and summer programs — and now you can help them on your wedding day as well. For your special gown, The Bridal Garden, 122 E. 79th St. (718) 752-5551

**PERFORMING ARTS FESTIVAL**

The Third Annual Lincoln Center Festival this summer promises to be as broad as it is thrilling, with over 100 performances. The Festival includes the legendary Chinese marathon opera The Peony Pavilion, in its first complete staging in 400 years, two U.S. premieres by Israel's Gersha Theatre, plus world premieres of the chamber opera *Padlock & Sarah*, the Stuttgart Ballet's *Clavico*

**ARTISTIC LADY**

Interested in the human body and its internal workings, from a psychological, mental, and emotional point of view, artist Nadine Hennelly focuses her work on the lines of the human



Artist Nadine Hennelly, with her model, is featured in the December issue of *Manhattan Magazine*.

body and the energy within. And what if her provocative, seductive, surreal, titled *28 Days*? Says the artist, "The only goal was to create one city sculpture a day based on



Manhattan

**SHOWCASE**

**NADINE HENNELLY**

**"I'VE ALWAYS HAD MY hands somewhere else,"** says former model Nadine Hennelly ([nadinellinc.com](http://nadinellinc.com)). She sculpted and exhibited her artwork while appearing in fashion magazines. She took photos in her spare time while working as a model on the *Late Show* with David Letterman. Last year, the Montreal native took the plunge and devoted herself full time to photography. She shoots in digital (usually with the Fujifilm FinePix S2 Pro), and often uses a processing technique that desaturates and recolorizes the photos, which gives the images an "almost painterly, ethereal" effect. "I prefer to be behind the camera instead of in front of it," she says. "You have total control." —Tessa Ho

*Dans l'hémisphère Nord, les grandes villes se ressemblent au matin de Noël et du Premier de l'an. La photographe et sculpteure montrealaise Nadine Hennelly, qui a vécu à Paris et New York, les connaît bien. Après une carrière de top model, qui lui a valu les pages couvertures des Vogue, Elle, Cosmopolitan et autres, elle a participé pendant sept ans à l'émission culte américaine Late Show with David Letterman. Elle signe maintenant des photos qui sont publiées dans les magazines américains et européens.*

*Le style à l'épreuve Christiane Guarnieri | Photo Nicolas Huil | Int. Nicole Savoie*



**féerie pastel** Rien n'évoque mieux la Grosse Pomme, à Noël, que l'association fluide des plumes et du cristal aux œuvres d'art moderne et au mobilier design, dont les New-Yorkais ont le secret. À côté du carrelage Ligne Roset, un sapin aux couleurs de sorbet est dressé pour Winston, le fils de Nadine, qui ne se sépare pas de Miss-Bey, son chien. L'arbre est truffé de plumes roses et de guêlandes saumon, dans un grand HOKER, FIGURINES ET ACCESSOIRES DANS LE SAVIN-BARRIERS

EMBALLAGES CADRAGE BOULANGER 100 FEUILLES





### à savourer des yeux

Le décor portugais et hispanique s'insère dans un aménagement dans l'éclectisme au parfait équilibre matériel. Mais il faut aussi avoir de bonnes et de belles idées de décoration. Un toit de sapin et d'impastants bougeoirs en bois en forme de bois de cerise ornent la table quadrilobée en pin entourée de chaises de Fritz Hansen achetées chez Terence Conran à Londres. En réflexion dans le miroir, une ancienne assiette orientale peinte à la main sur feuille d'argent. Chez l'abbé Jean Guéhen, le comptoir de la cuisine accueille des coupes colorées et un bouquet de gaufriers fins, servis au sucre et remplis de confiture. [www.terenceconran.com](http://www.terenceconran.com)



### garde-à-vous

Sous une composition d'œuvres d'art, un buffet des années 60 se prête à un arrangement festif réunissant une collection de casse-noisettes. Au centre de la composition centrale, une création du groupe Paper Rad, signe Jack Jacob Groot; à droite, un collage texte et photo en noir et blanc de Nadine Henneley, musicienne et scénariste d'animation. [www.terenceconran.com](http://www.terenceconran.com)

© NADINE HENNELLY PHOTOGRAPHY. HAIR: JESSICA HAIR FOR MAC. COSMETICS: HAIR. MAKEUP: KATHERINE STYLIST. MAKEUP: JONAS. © JEFFREY ELBES



STATE OF THE ART

# A STAR IS BORN

## A LATE-NIGHT MODEL'S PHOTO CAREER TAKES OFF, NEW BOOKS, AND MORE.



Hennelly and friends (from top): David Letterman, Whoopie Goldberg, and Paul Shaffer. Right: Hennelly's shot of supermodel Frederique.

**A**fter spending an afternoon shooting New York City from the Fujifilm blimp, Nadine Hennelly came away with some personal and photographic insight. "It's a great way to take pictures," she says. "You're at a great altitude, and you're moving slowly. I love riding in blimps!"

Even before her ride, Hennelly was familiar with many, many objects that float, courtesy of her most recent employer, David Letterman. For the past four years, she has appeared on Letterman's late night TV show as one of the two models who dropped a bewilderingly wide array of items, from canned food to bags of fertilizer, into a tank of water to help Dave determine whether or not they would in fact float. "Let's just say it was an off-the-wall and very fun job," says Hennelly.

About a year ago, Hennelly—a former model with the Elite agency who has appeared in *Elle*, *Vogue*, *Glamour*, and other magazines—started thinking about changing careers and moving behind the camera. The Montreal native, who studied art and has exhibited her own sculptures, began experimenting with digital cameras. She used the Fujifilm FinePix S2 Pro to shoot an old friend, supermodel Frederique Van Der Wal (see page 9). "Nadine has an amazing way of coaxing out my strengths and femininity and capturing both," says the model.

With a trip planned to Paris to work on a book project, Hennelly recently left *The Late Show* in order to pursue photography full-time. "Once I started shooting, I knew this was the right kind of work for me," she says. "I love the challenge of fashion, the clothes, the people, and working with light." Will her career sink or float? We predict the latter.

—JEFFREY ELBES

### CAREERS

### BOOKS

**Photo Books for Fall:** Here are three new essentials for your

library: **Classic Baseball** (Abrams, \$35), from legendary sports photographer Walter Iooss, reminds us of the game's grace and edgy excitement.... Photographer Jeff Mermelstein's **No Title Here** (powerHouse, \$45), shows him to be an arch observer ranking among the likes of Parr, Erwitte, and Winogrand.... **The Photography of Charles Sheeler, American Modernist** (Bulfinch, \$75) includes his early architectural images, abstract nudes, and later photographs of Ford Motor Company's River Rouge plant.—J.E.



**The Pro File** An informed source recently urged us to try to uncover the derivation of a relatively new photographic term: "chimping." It is used by sports photographers to describe the act of instantly reviewing images by scrolling through frames on the LCD screens of their digital SLRs. A message board on **SportsShooter.com** showed the term to be hotly debated by sports-photography pros. The derivation? "Chimping" refers to the sound the shooters make when they discover they've taken a nice picture—"oh, oh, oh!" Not very dignified, but useful. —J.E.

### WEB



maison créative

# Mise en scène personnelle

NADINE HENNELLY PHOTOGRAPHE ET DÉCORATRICE D'INTÉRIEURS. C'EST FONDRE LES STYLES, SON STYLING, C'EST FONDRE AVEC ASSEMBLAGE MODERNE ET ANCIEN, STYLE INTENTIONNEL ET PERSONNEL. TOUJOURS FAIRPLAYANT DE SA MAISON MONTRÉALAISE.

RECHERCHER ET SUIVRE DES TENDANCES DÉCORATIVES  
PROFITER DE LA VIE

## Salle à manger : un univers poétique

Une pièce, un lieu, un univers. Et maintenant, le projet de décoration est au point. Nadine Hennelly a su créer un univers poétique à la fois moderne et classique en jouant sur les contrastes et les textures. Les couleurs sont sobres, les lignes sont épurées. Le résultat est une pièce à vivre, un lieu de vie, un lieu de bien-être.

Adressa, vers et à l'extérieur en regard de la rue (Photo)

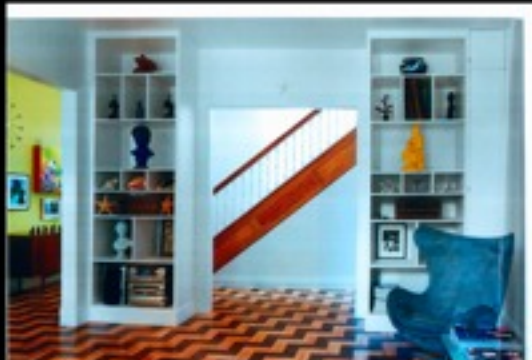
Le bâtiment a été construit à la fin des années 1960 dans une rue calme de la ville de Montréal. À l'époque, il s'agissait d'un immeuble d'habitation typique de la ville. Mais depuis, il a été transformé en un espace de vie unique. Les propriétaires ont voulu créer un lieu où ils pourraient vivre et travailler ensemble. Ils ont donc décidé de transformer l'immeuble en un espace de vie communautaire. Ils ont donc décidé de transformer l'immeuble en un espace de vie communautaire. Ils ont donc décidé de transformer l'immeuble en un espace de vie communautaire.

**Au salon :**  
classée, rigoureuse et simple d'esprit

Le salon est un espace de vie communautaire. Il est conçu pour être un lieu où les gens peuvent vivre et travailler ensemble. Il est donc conçu pour être un lieu où les gens peuvent vivre et travailler ensemble. Il est donc conçu pour être un lieu où les gens peuvent vivre et travailler ensemble.



**La forte présence du plancher**  
Le plancher en bois est un élément clé de la décoration. Il est conçu pour être un lieu où les gens peuvent vivre et travailler ensemble. Il est donc conçu pour être un lieu où les gens peuvent vivre et travailler ensemble.



**Les bibliothèques :**  
la boutique historique et ludique de Nadine

Les bibliothèques sont un espace de vie communautaire. Elles sont conçues pour être un lieu où les gens peuvent vivre et travailler ensemble. Elles sont donc conçues pour être un lieu où les gens peuvent vivre et travailler ensemble.

**Chambre à coucher :**  
mise en scène théâtrale

La chambre à coucher est un espace de vie communautaire. Elle est conçue pour être un lieu où les gens peuvent vivre et travailler ensemble. Elle est donc conçue pour être un lieu où les gens peuvent vivre et travailler ensemble.



**Pastisier complète**

Le pastisier est un espace de vie communautaire. Il est conçu pour être un lieu où les gens peuvent vivre et travailler ensemble. Il est donc conçu pour être un lieu où les gens peuvent vivre et travailler ensemble.



Le salon est un espace de vie communautaire. Il est conçu pour être un lieu où les gens peuvent vivre et travailler ensemble. Il est donc conçu pour être un lieu où les gens peuvent vivre et travailler ensemble.



La chambre à coucher est un espace de vie communautaire. Elle est conçue pour être un lieu où les gens peuvent vivre et travailler ensemble. Elle est donc conçue pour être un lieu où les gens peuvent vivre et travailler ensemble.



Whether it's a conchalean Indian sari, a brightly printed African print, a gaily dyed Tibetan scarf, clothing with an ethnic flavor is a favorite among models and movie stars alike. We can't think of a better way to add a colorful exotic aura to your style this

AMERICAN HARPERS BAZAAR MAGAZINE

WESTMOUNT INDEPENDENT - December 17-18, 2008

## Hennelly hosts vernissage

Recent New York City transplant and artist Nadine Hennelly held a vernissage of new works entitled "Urban Abstractions" on December 3 at Studio H in St. Henri.

The former top model, who - prior to moving to Westmount - appeared regularly on the *Law & Order* series, has continued a series of photographs that were initially begun in NYC on assignment for *Vogue*.

On display at Studio H were Hennelly's photographs of industrial sites in and around Montreal.

The mostly Westmount crowd included Alexandra and Jacqueline Madougal, former premier of Quebec Pierre Marc Johnson, 2008 The Hockey and Roger's Cup champion, and Eugenie Lapierre.

The show can be seen by appointment until December 19. Contact studio H at 514-933-2317 or go to [www.nadinehennelly.com](http://www.nadinehennelly.com).



Nadine Hennelly

## Friends of Library sales succeed

The Friends of the Westmount Library hosted two sales in November. \$21,475 was raised in total. At city council on December 19, Councillor Kathleen Duncan explained that the two principal organiza-

tion, Carolyn O'Neill and Lee Tychol, studied past sales and those of other groups in order to optimize results. She later told the Independent, "It was a huge accomplishment. They were so entrepreneurial and really thought out how maximize the profits from the sale." All proceeds will be used by the Westmount Public Library.

### Correction Flying Five facts

Our article, "Moving Muscles - the book" (December 9, p. 4), got it wrong. Of the five cyclists who completed the cross-Canada Moving Muscles trip, only Westmounter Keith Martin has muscular dystrophy.

The book - *The Flying Five* - has an online purchase at [www.scott.com](http://www.scott.com) or contact Scott at 416-291-1111. It is available for purchase at 4400 Steeles St., 514-474-6000 and by email at [flyingscissors@gmail.com](mailto:flyingscissors@gmail.com).

## Berger brings thrills for the holidays

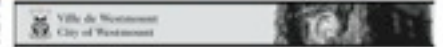
Westmounter Len Berger has just published two "erotica thrillers" - *The Berlin Doctor* and *The Kremlin Betrayal* - that aim to entice to the era of well-written, readable novels of intrigue and suspense.

Both novels are available online at [www.chapters.indigo.ca](http://www.chapters.indigo.ca) and [www.worldbooks.com](http://www.worldbooks.com).

## La Cache's Greene store to close



As previously reported (September 26, p. 3), La Cache's parent company is undergoing a bankruptcy reorganization. The store on Greene Ave. is in liquidation and may close as early as December 15.



Veuillez noter qu'il n'y aura pas de collecte d'ordures les jeudis 25 décembre et 1<sup>er</sup> janvier.

Exceptionnellement, elle aura lieu UNE JOURNÉE PLUS TÔT, soit les mercredis précédents : le 24 décembre et le 31 décembre, à la même heure que d'habitude.

La collecte des matières recyclables qui se fait normalement le mercredi demeure INCHANGÉE.

**UNE JOURNÉE PLUS TÔT!**  
Collecte d'ordures - Période des fêtes  
Garbage Collection - Holiday Schedule  
**ONE DAY EARLIER!**

Please take note that there will be no garbage collection on Thursday, December 25 and Thursday, January 1.

Exceptionally, garbage collection for affected streets will instead take place ONE DAY EARLIER on the preceding Wednesdays, December 24 and December 31 at the same time of day.

Please note that recycling collection, which normally takes place on Wednesday, remains UNCHANGED.



**URBAN ABSTRACTIONS**

**NADINE HENNELLY**

location  
**STUDIO H**  
 2270 st-antoine ouest  
 r.s.v.p. 514.799.9992

**04/12/08**  
 6-8PM



ARTS14 2008 aggrimage.com 30x40"

**NADINE HENNELLY**  
 December 4 2008

Thursday December 4th 2008  
 STUDIO H  
 2270 st-antoine Ouest  
 Montreal  
 6pm-8pm

**URBAN ABSTRACTIONS:**  
 Montreal  
 Industrial sites have been capturing Hennelly ever since Fujita took her in NYC to shoot images in and around the city. Western culture blossomed with the promise of the industrial revolution. What once was blending now engulfs us to a wasteland which is no longer sustainable. Hennelly explores and photographs various industrial and commercial sites in and

around urban areas. Selecting elements which generate images that sometimes exist as abstractions, as pure form, or fragments of their original site. Further enhanced by digital process and manipulation, the resulting images are almost perfectly framed in their composition. Some images have been treated as monochrom as in Andy Warhol's ink blot paintings which further the idea of experimentation

and exploration in the continuation of the series by the artist. Using the past as a departure point, awareness and change become positive propellers for the future.



AMERICAN HARPER'S BAZAAR MAGAZINE / WESTERN INDEPENDENT



## NADINE HENNELLY

AFTER LIVING FOR OVER 18YRS IN NEW YORK CITY, NADINE MOVED BACK TO MONTREAL IN 2007. IN NEW YORK THE FORMER TOPMODEL WORKED WITH SOME OF THE WORLDS MOST FAMOUS PHOTOGRAPHERS AND GRACED THE COVERS OF SOME OF THE MOST PRESTIGIOUS FASHION MAGAZINES. WHILE LIVING IN NYC NADINE CONTINUED HER FINE ART EDUCATION AT THE ARTS STUDENTS LEAGUE, THE SCULPTURE CENTER, AND NYU. NADINE'S PHOTOGRAPHY HAS BEEN FEATURED IN SEVERAL INTERNATIONAL PUBLICATIONS. BETWEEN 1996-2003 SHE APPEARED WEEKLY ON THE LATE SHOW WITH DAVID LETTERMAN AS ONE OF 2 MODELS IN OVER 400 SKITS. WHILE APPEARING ON THE LATE SHOW EVENINGS, NADINE WAS HIRED DURING THE DAY BY THE TOP MODELING AGENCIES IN NYC TO SHOOT THEIR NEW MODELS. BOTH HER SCULPTURES AND PHOTOGRAPHS HAVE BEEN EXHIBITED IN NEW YORK CITY, WHERE SHE WAS REPRESENTED IN CHELSEA BY ALEXANDRE DE FOLIN GALLERY.

SINCE 2008, NADINE HAS RETURNED TO CREATING HER WORKS OF ART AND SHOOTING PORTRAITS AT HER STUDIO IN LE PETIT BOURGOGNE. SHE HAS EXHIBITED TWO SOLO SHOWS, PARTICIPATED IN ARTWESTMOUNT 2010, AND EXHIBITED IN "GROUP SHOW GRIFFINTOWN" AS PART OF THE NUIT BLANCHE MONTREAL 2011. THE HUGELY SUCCESSFUL URBAN ABSTRACTIONS SERIES ARE LARGE [72"X 24"] PHOTOGRAPHIC WORKS CREATED IN PLEXIGLASS IN LIMITED EDITIONS OF EIGHT.

FURTHER INQUIRIES CAN BE MADE BY CONTACTING THE ARTIST DIRECTLY.

NADINE HENNELLY  
2252 ST ANTOINE STREET WEST  
MONTREAL Q.C  
H3J 2K6

[WWW.NADINEHENNELLY.COM](http://WWW.NADINEHENNELLY.COM)

SELECTED PRIVATE AND CORPORATE COLLECTIONS

JEAN PIGOZZI ART COLLECTOR AND PHILANTHROPIST NEW YORK CITY  
DAVID LETTERMAN TALK SHOW HOST NEW YORK CITY  
LORD RUFUS ALBEMARLE INDUSTRIAL DESIGNER LONDON ENGLAND  
VIKRAM CHATWAL VICE PRESIDENT HAMPSHIRE HOTELS NEW YORK CITY  
PIER GUERCI PRESIDENT LORO PIANA NEW YORK CITY  
VITTORIO ASSAF PRESIDENT AND OWNER ZERAFINA RESTAURANT GROUP NEW YORK CITY  
LIEVE VADEPUTTE INDEPENDENT CURATOR ANTWERP BELGIUM  
HUBERT MARLEAU PRESIDENT PALOS CAPITAL MONTREAL CANADA  
PIERRE MARC JOHNSON FORMER PREMIER OF QUEBEC MONTREAL CANADA  
AGENCE GOODWIN TALENT REPRESENTATION MONTREAL QUEBEC  
AARON RAND RADIO PERSONALITY WESTMOUNT QUEBEC  
CLAUDE MEUNIER AUTHOR AND HUMORIST OUTREMONT QUEBEC  
HELENE COUTURE PHILANTHROPIST AND ART COLLECTOR WESTMOUNT QUEBEC  
CAMPBELL STUART FORMER MAYOR MONTREAL WEST MONTREAL QUEBEC  
BOB JOHNSON AUTHOR WESTMOUNT QUEBEC



Photo: Alexandre de Folin Gallery NYC